

MAP used by SitePath.

Look at the circle around Option 1.

This radius was based on a tower height of 45 metres, so a radius of 135 metres.

Addresses that they considered to be within the radius:

536 Country Club Drive

544 Country Club Drive (did not receive the package)

552 Country Club Drive (did not receive the package)

560 Country Club Drive (did not receive the package)

568 Country Club Drive

857 Fairways Dr. (did not receive the package)

553 Sandwedge

825 Village Way (Christian Fellowship Centre)

825 Village Way (Little Gems Infants & Toddlers Centre)

Landowner(s) on left of Country Club Drive (in the red below: numbers 7-6-5)



THE ACTUAL HEIGHT according to the notification package prepared by SitePath is **49 metres**. The height must include the 4 metre lightning rod according to the CPC doc.

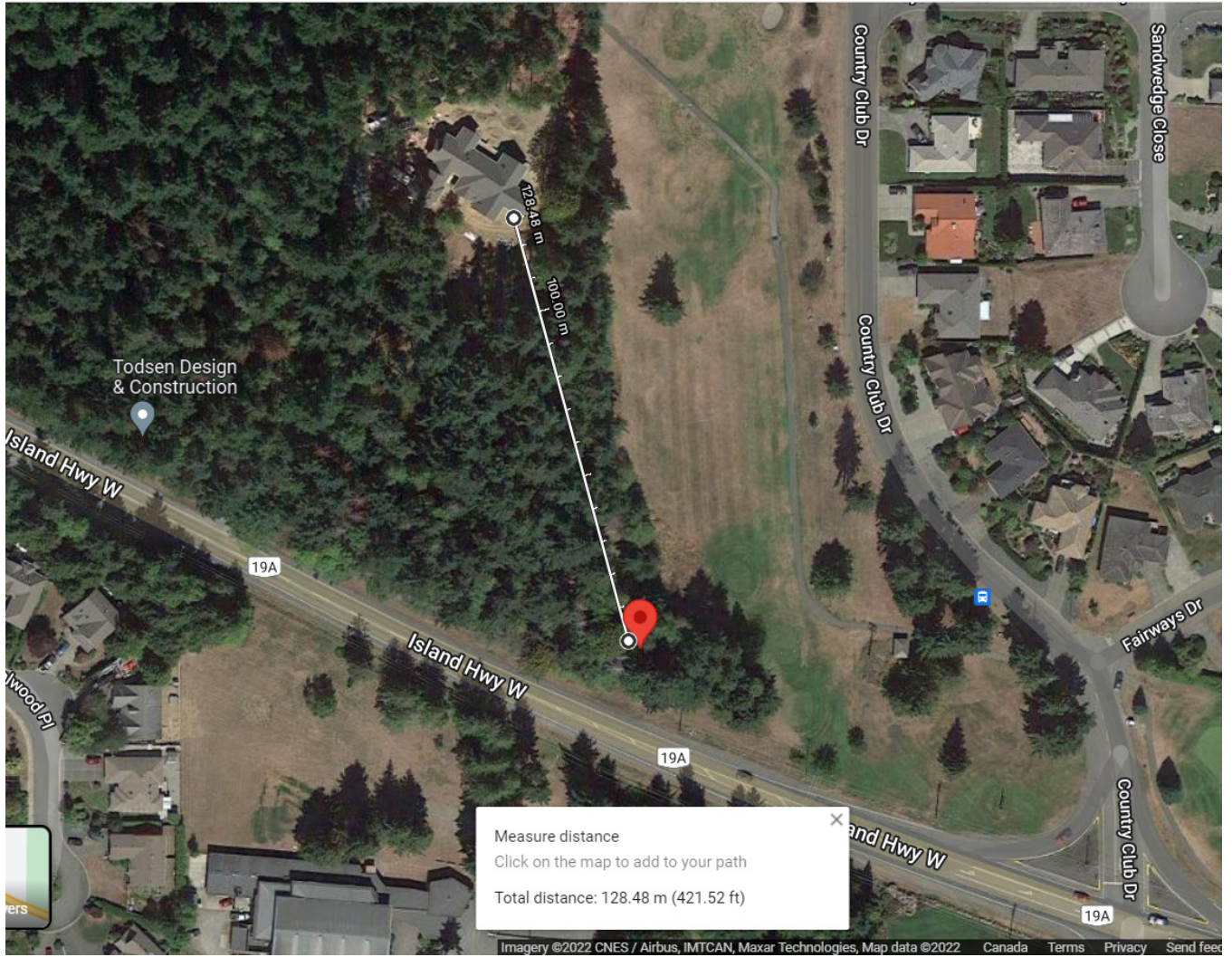
Therefore the radius is 12 metres wider than SitePath indicated, i.e.

147 METRES.

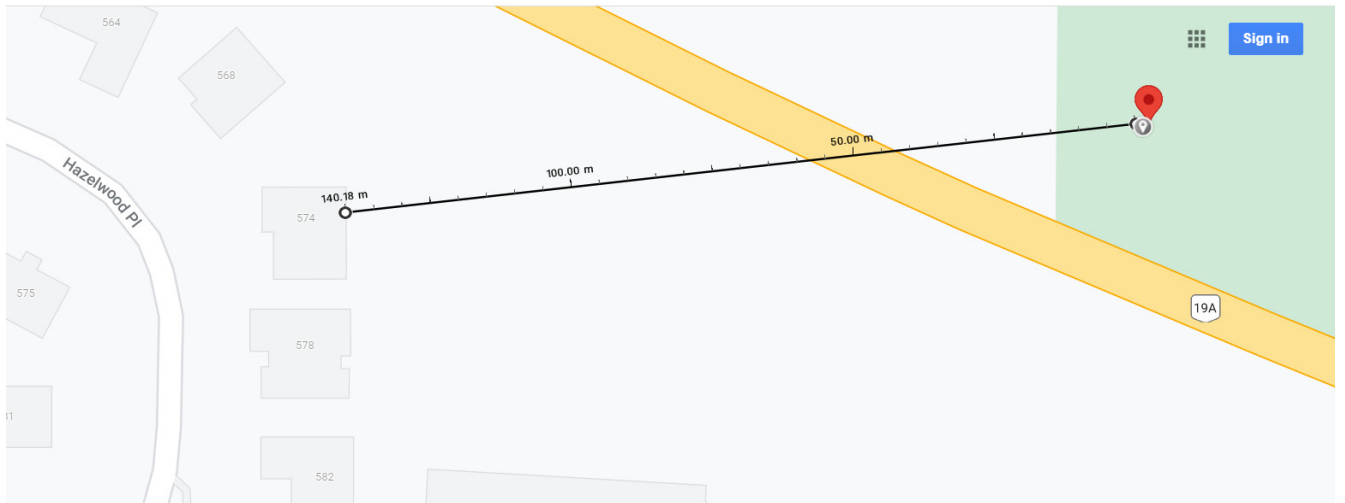
So the notification package should have been sent additionally to:

- 574 Hazelwood Place
- 578 Hazelwood Place
- 2075 West Island Hwy

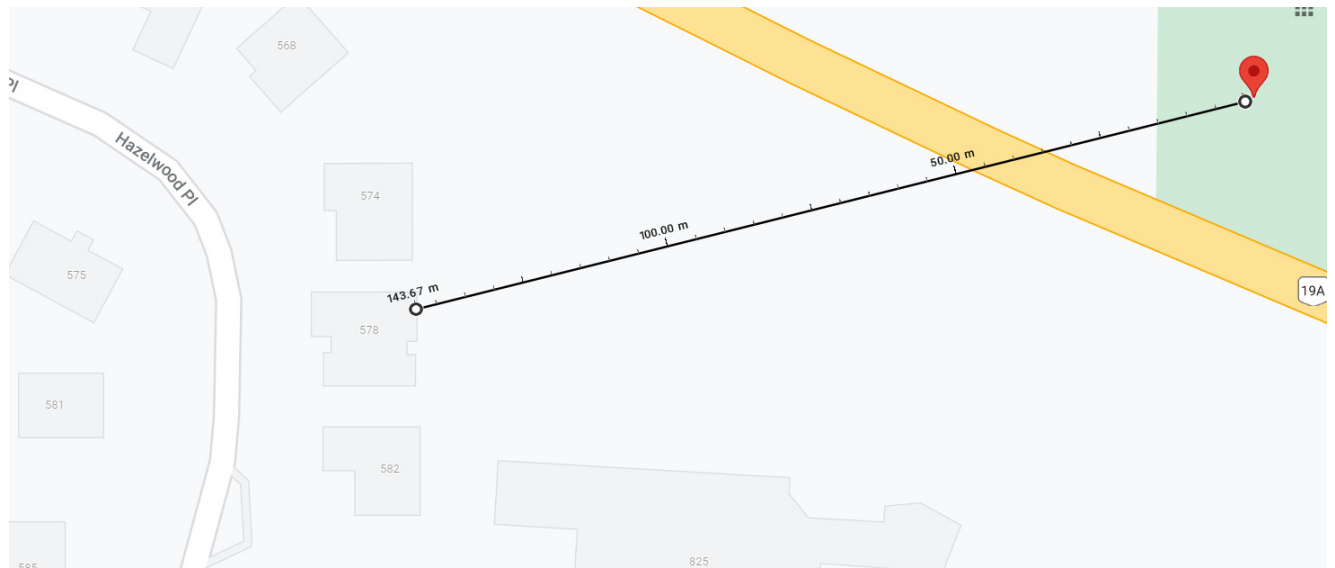
2075 West Island Hwy (128 metres to the tower)



574 Hazelwood Place (140 metres from the tower)



578 Hazelwood Place (143 metres from the tower)



We have another 7 whom who did not receive the package had they sent it out to the 47 in the Town's plan. However, these are not in the radius of 3x the height of the tower and therefore if we are following the CPC default consultation, they do not count.